



# Powerful Centrifugation

in compact Bench-top size

General Purpose  
Centrifuge



# General Purpose Centrifuge



**For Mid to Higher volume centrifugation requirements. Ideal for a wide range of Laboratory & Testing sites, including:**

- Quality Control
- Forensic Science
- Chemical & Industrial
- Food & Beverage
- Microbiology
- Environmental Science
- Pharmaceutical Research
- Clinical Diagnostics
- Protein Chemistry
- Cellular & Molecular Biology

#### **Applications include:**

- Material Testing
- Sample Preparation
- Centrifugal Separation
- Particle Size Analysis
- Cell Fractionation
- Water & Soil Analysis
- Density Gradients
- Drug Development
- Blood & Urine Analysis
- Microorganism Separation

## **General Purpose Centrifuge Specifications**

Speed Range	500 – 6,000 RPM
RCF	4,668 x g (max RCF calculated) with typical 15 mL tube
Capacity	8-place 15 mL tube rotor: 120 mL total maximum liquid volume
Run Time Ranges	30 seconds – 60 minutes or continuous

#### Superb Function

- High Speed, Adjustable Speed (500 to 6,000 RPM) can be set in RPM or RCF
- Programmable with memory for up to 8 programs
- Adjustable time (30 seconds to 60 minutes or continuous)
- Rapid acceleration and gentle electronic braking (deceleration time of <60 seconds)
- Digitally controlled brushless motor for accurate speed control and no motor maintenance required

#### Optimal Design

- Easy to read Digital back-lit display
- Tool-less rotor removal for convenient loading and cleaning
- Clear lid/Viewing porthole to allow non-contact speed verification by non-contact tachometer
- Bench-top Size - compact footprint for workspace use

#### Built-in Safety

- Safety features help ensure it will not operate when the lid is open, unit is jammed or unit is out of balance
- Manual lid unlock allows users to open lid in case of a power failure and prevents loss of samples

## Optimal Design

Powerful centrifugation with a compact bench-top footprint and quiet operation.

### Hinged Lid Design

- Provides large clearance for open access to the rotor and tubes for easy load/unload and cleaning

### Clear lid/Viewing porthole

- Allows non-contact speed verification by non-contact tachometer

### 8-Place Removable Rotor

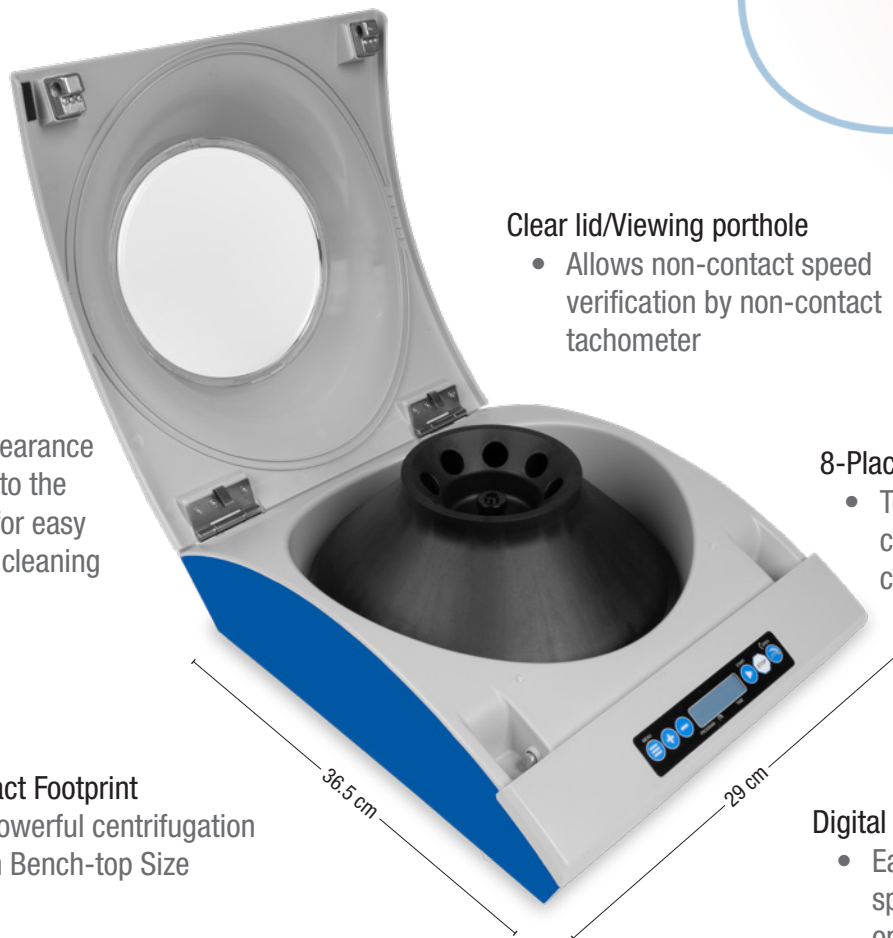
- Tool-less removal for convenient loading and cleaning

### Compact Footprint

- Powerful centrifugation in Bench-top Size

### Digital Back-lit Display

- Easy to read to set time, speed and programmable operations



## Versatility



Rotor fits a multitude of tube sizes with the included tube adapters and spacers

Compatible tube types\* include but are not limited to:

- 10 - 18 mL Plastic & Glass, Round, Flat & Conical Bottom Tubes
- 5 mL MicroCentrifuge Tubes
- 15 mL Conical Centrifuge Tubes

\* It is the user's responsibility to make sure the tubes used are suitable and up to the centrifugation protocol required

Tube Adapter Sleeve



## What you get



General Purpose Centrifuge	8 Tube Adapters	1 Low Voltage, Double Insulated Power Adapter with 4 Interchangeable Plugs
8-Place Rotor	24 Tube Spacers	

It's chemically resistant (made from ABS and polycarbonate).

It's easy to clean. It's maintenance free. It's quiet. It's Bench-top Size.





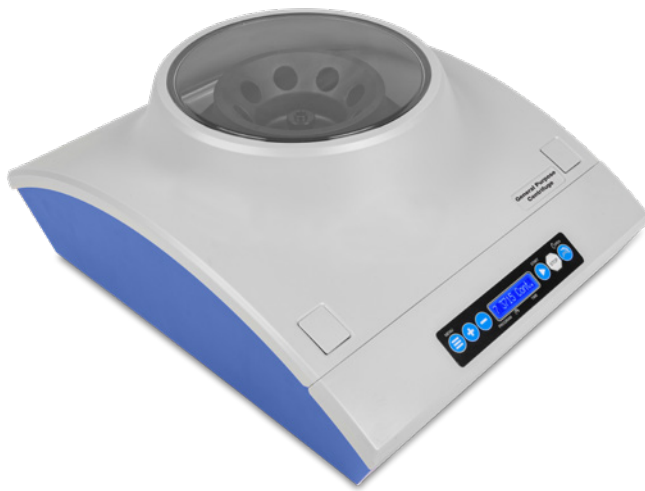
Guaranteed by strict standards that include 3rd party plant reviews and 100% multilevel product inspections. Our equipment reliability is rated 99.7%.

**What does that mean to you?**

Fewer repairs. Fewer replacements.  
And a lower cost of ownership.

## General Purpose Centrifuge

Item No.	Color	L x W x H in	L x W x H cm	UOM
120964	Grey/Blue 	14.4 x 11.5 x 5.8	36.6 x 29.3 x 14.8	1/ea
120963	Grey/Purple 			



## Specifications

U.S. Design Patent D814,045

Weight	4.5 kg (9.93 lb)	
Operating Temp.	Range 2°C to 40°C	
Max. Relative Humidity	Non-condensing, 80% for temperatures up to 31°C decreasing linearly to 50% R.H. at 40°C	
Electrical	Meets global power and efficiency requirements with grounded cord sets for North America, Japan, EU, UK and Australia	
Power Adapter Rating	Input	100-240 VAC, 2.5A, 50/60 Hz
	Output	12 VDC, 12.5 A, 150W
Centrifuge Rating	Input	12 VDC
	Current (Under load)	Approx. 7.7 A
	Power	Approx. 93W
Certifications	CE, UKCA, RoHS3, WEEE, IVDR* *Class A, Rule 5a (Article 47, Annex VIII) per IVDF 2017/746	